

For Sale > Vehicles > Other
Ad Number: 233547

Location: Yellowknife, NT
Posted: Sep 2nd 2025 at 9:35am

Terex TSR-80 Skid Steer Loader

2011 Terex TSR-80 SKid Steer Loader. Could also come with over-tiretracks and Fecon mulching unit.

Price: \$ 25,000.00 or best offer

Phone: 506-988-1718

more info is available for this ad at www.yktrader.com

**TSR-80**

SKID STEER LOADER



OPERATING SPECIFICATIONS

Loader Area	Radius
Operating Weight	7750 lbs (3515 kg)
Shipping Weight	6900 lbs (3130 kg)
Tipping Load	4040 lbs (1795 kg)
Operating Capacity	2530 lbs (1152 kg)
Operating Capacity (with optional counter weight)	2530 lbs (1152 kg)
Maximum Travel Speed (with optional 2 speed transmission)	12 mph (19 km/h)
Hydro Jet Bucket Piv	125 (3180 mm)
Dump Height at Bucket Discharge	65.4 (1665 mm)
Dump Height at Rear Discharge	26 (660 mm)
Max Rear Angle of Full Height	45°
Bucket Breakout Force	5080 lbs (2284 kg)
Arm Lifting Force	7080 lbs (3173 kg)
Rear Angle of Departure	35°
Bucket Roll Back at Ground Level	10°
Ground Clearance	15.5 (393 mm)
Overall Length with Bucket	144 (3658 mm)

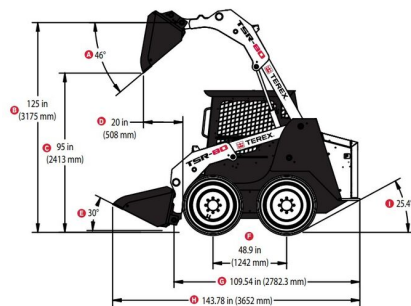
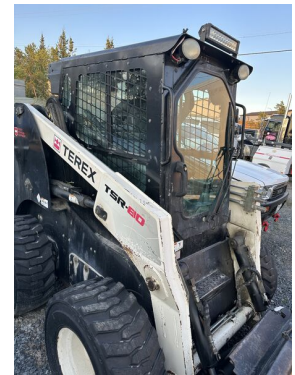


AUXILIARY HYDRAULIC SYSTEM

System Pressure, Maximum	3300 psi (230 bar)
Controls	Pilot hydraulic joystick
Couplers	3/4" Flat Faces
Auxiliary Pump Flow	21 gpm (81 lpm)
Optional Flow	42 gpm (159 lpm)

ENGINE

Type	Diesel, 4-cylinder, Turbocharged	Battery	925 (C)
------	----------------------------------	---------	---------



Model	Petrol B30-37	Max engine alterator
Displacement	209 cm ³ (12.1)	Duties
Gross horsepower @ 2500 rpm	83 hp (61 kW)	1-120 per minute operation station
Torque Peak	103 N.m (200 lbs-ft)	
Cooling System	Engine driven fan and coolant-water pump radiator	
Lubrication	Oil bath in wet sump	
Ignition	Standard, 42 x 1 mm	
Light and Chassis		
Emission Controls	Meets all U.S. EPA Interim Tier 4 Standards	

DRIVE TRAIN

Drive System	Hydraulic
Bow Tie Configuration	
Churn Case	108 344D Cases
Wheel Size	12x16.5
Wheels Over Size	72 in (203 cm)
Weight Over Size	40 in (1015 cm)

SERVICE CAPACITIES

Fuel Tank	36 gal (137 L)
Hydraulic Tank	10 gal (38 L)
Fluid Capacity/Refill	16 gal (61 L)

OPERATOR STATION

Seat: Standard with an optional adjustable suspension seat available.

Lower Control: Right-hand hydraulic joystick controls handle 30% with interlocked control of auxiliary hydraulics.

Drive Control: Left hand dual hydraulic joysticks controls machine speed and direction.

Engine Speed Control	Fast Indicator/Lights	Fast Tachometer
		Engine Temp
		Rear mirror
		Safety
		Low-speed / 3rd level
		Hydraulic temperature
		Water temperature

ROPS/TOPS

	Memo ISO 3474:2008
	ISO 16843:2005
	ISO 1444:2005 Level 1

Illumination

	2 Forward Facing Lights
	2 Rear Facing Lights